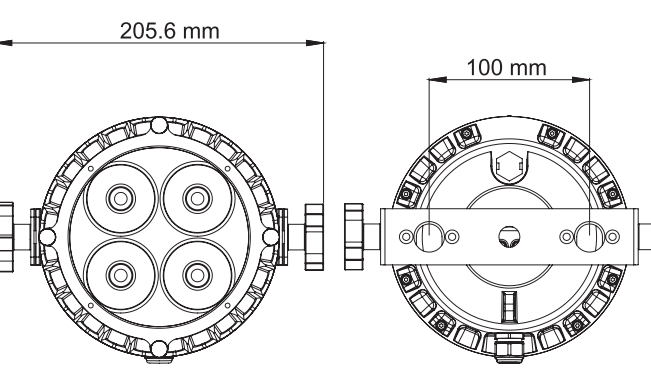
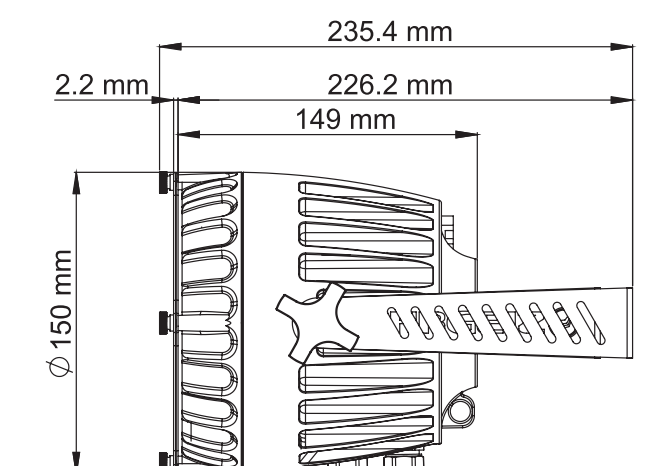
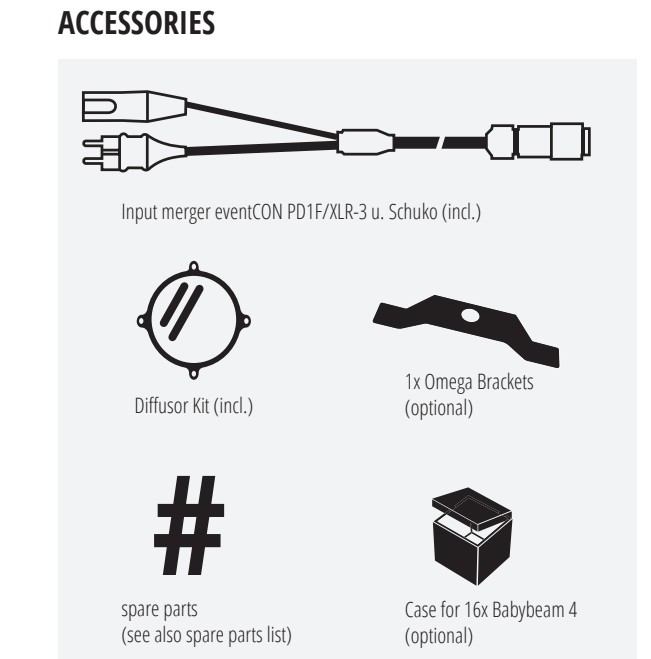


BABYBEAM 4 // HARD SKILLS



SPECIFICATIONS

- Light source**
- 4 x 15W Class RGBW LED
 - Rated lumen output: 1.100 lm
 - LED Life Expectancy: approx. 50.000 hours
- Optical system**
- ConsistentColor™ Optics
 - Beam angle 8°
- Functions**
- RGBW, 8 bit color mixing (16 bit with software update)
 - SteadyColor™ Dimming
 - Seamless CTO
 - Virtual color wheel with 39 colours including whites (2.700 K, 3.200 K, 4.200 K, 5.600 K, 7.200 K and 8.000 K)
 - High resolution dimmer 0-100%
 - Strobe with variable speed (max. 20Hz)
 - Pre-programmed random strobe & pulse effects
- Thermal**
- Maximum ambient temperature: 45 °C (113 °F)
 - Internal noiseless fan
- Control and programming**
- Setting & Addressing: 1x6 characters LED display & 4 buttons
 - Protocol: USITT DMX-512
 - Control channels: 2,3,4,5,6,8
 - 6 DMX protocol modes
 - 3-editable programs, each up to 25 steps
 - Stand-alone mode
 - Firmware update via DMX-line
 - DMX In/Out: eventCON®
 - Power In/Out: eventCON®
- Electrical Specifications**
- Electronic switching power supply with auto-sensing
 - Input voltage: 100 – 240 V AC / 50 – 60 Hz
 - Max. power consumption: 45 Watt
- Mecanical Specification**
- IP67 rating
 - Height including bracket: 231.8 mm (9.12")
 - Height without bracket: 153.8 mm (6.05")
 - Width: 205.6 mm (8.09")
 - Depth: 158 mm (6.22")
 - Weight: 2.7 kg (5.95 lbs)
- Rigging**
- Centered Ø12mm hole in bracket
 - Preparation for one omega bracket
 - 1 attachment point for safety wire
- Included accessories**
- Diffusion filter 18° & 58°
 - eventCON/Schuko + XLR-3

Has to be installed by qualified personnel

Adjusted local regulations

Only connect to a suitable power supply

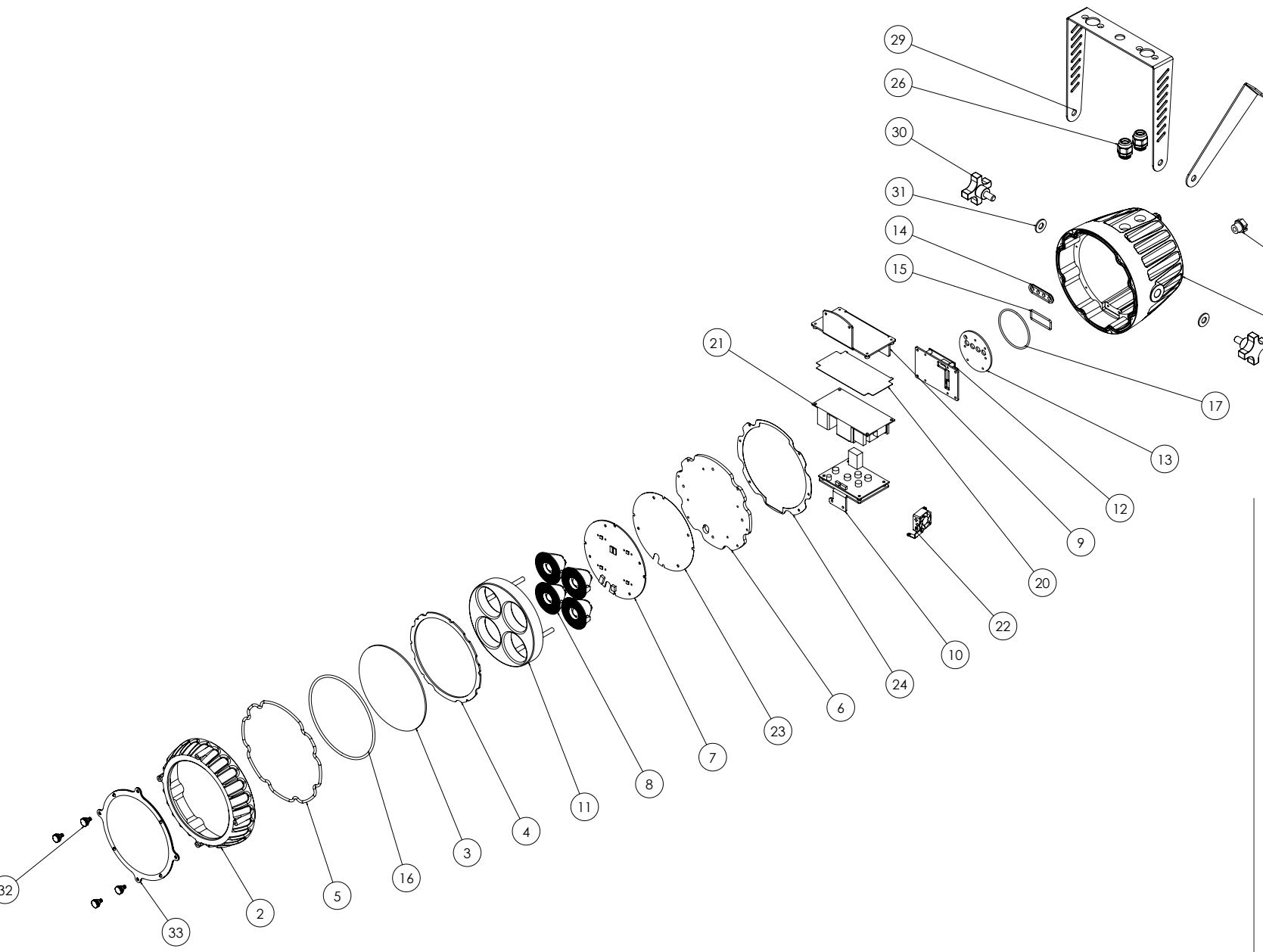
Pay attention to the safety instructions in the manual

Use an M10 Bolt for installation

Always use a suitable safety rope

Always has to be grounded properly

IP67



SPAREPARTS

#	DESCRIPTION	QTY	ITEM NO.
1	Fixture Housing Base	1	106270
2	Fixture Housing Top	1	106253
3	Front Lens	1	106255
4	Clamp	1	106256
5	Sealing Ring Fixture Housing	1	106260
6	LED Board Heat-Sink	1	106259
7	Babybeam4 LED Board	1	105711
8	8 Deg. LED Lens	4	106258
9	PSU Bracket	1	106263
10	Driver Board Bracket Sub Assy A	1	105712
11	Lens Holder	1	106257
12	Control Board	1	105713
13	Rear Water-sealing Plate	1	106264
14	Water-sealing Rubber for Input Button	1	106267
15	Water-sealing O-ring	1	106266
16	Top Water-sealing O-Ring-1	1	106254
17	Bottom Water-sealing O-Ring	1	106265
20	Power Isolation Mylar	1	114440
21	Power Supply Unit (PSU)	1	106261
23	Heat Transfer Pad LED Board	1	106260
24	Isolation Pad LED Board	1	106273
25	Waterproof PG Glands	2	106273
27	Waterproof Air Ventilation Valve	1	106271
28	Fixture Bracket A (LOGO)	1	106272
29	Fixture Bracket B	1	106274
30	Bracket Securing Screw Knob	2	106269
31	Standing Bracket Rubber Stop	2	106268
32	Diffusor Holder Rubber Stop	1	106252
22.1	Bracket for Fan	1	113615
22.2	Fan 25x25x10	1	113616
33.1	Diffusor 18 deg.	1	106294
33.2	Diffusor 58 deg.	1	106295

EXPLODED DRAWING

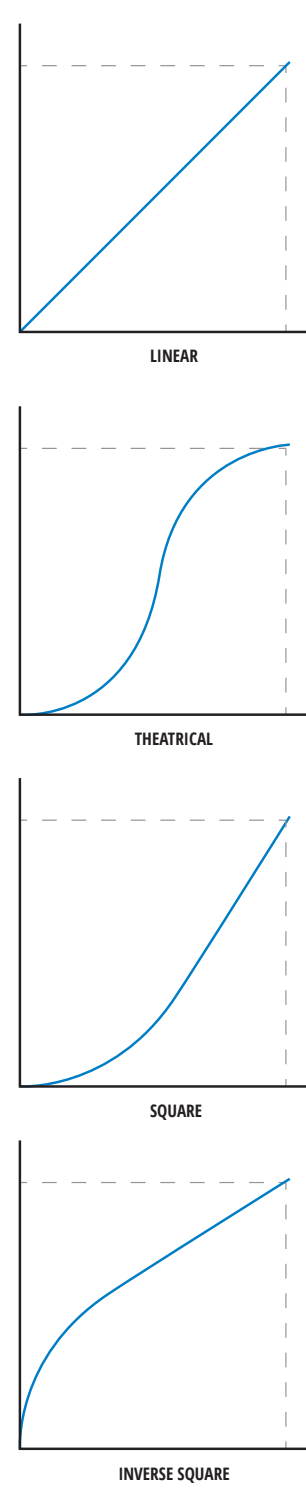
BABYBEAM 4 // SOFT SKILLS

MENU MAP

Addr	1 - 512	Function	
test	on	▶ play a test sequence	
	off	▶ stop the test sequence	
	red	0-255 ▶ Set a colour, shutter & dimmer for the static stand alone	
	green	0-255	
	blue	0-255	
	white	0-255	
	dimmer	0-255	
	macro	0-255	
	shutter	0-255	
	reset	▶ reset the values for the static stand alone	
salone	alone	▶ device runs stand alone program	
	master	▶ device runs the stand alone and sends slave sig	
	slave 1	▶ device runs slave signal 1	
	slave 2	▶ device runs slave signal 2	
	slave 3	▶ device runs slave signal 3	
	play	prog 1	▶ Play Prog 1 (while played, speed is displayed and can be edited)
		sound1	▶ Play Prog 1 sound triggered
		prog 2	▶ Play Prog 2 (while played, speed is displayed and can be edited)
		sound2	▶ Play Prog 2 sound triggered
		prog 3	▶ Play Prog 3 (while played, speed is displayed and can be edited)
sound3		▶ Play Prog 3 sound triggered	
no dmx		prog1	▶ play prog 1 in case of signal loss
		sound1	▶ play prog 1 sound triggered in case of signal loss
		prog2	▶ play prog 2 in case of signal loss
		sound2	▶ play prog 2 sound triggered in case of signal loss
	prog3	▶ play prog 3 in case of signal loss	
	sound3	▶ play prog 3 sound triggered in case of signal loss	
	lock	off	▶ disable lock
		on	▶ enable device lock
		set	000 ▶ set a password
		on	▶ display is always on
1 min		▶ display is shut down after 1 minute	
5 min		▶ display is shut down after 5 minutes	
60 min		▶ display is shut down after 60 minutes	
auto		▶ auto	
dmx		▶ react to dmx after boot	
static		▶ play static after boot	
boot_mode	prog1	▶ play prog 1 after boot	
	sound1	▶ play prog 1 with sound	
	prog2	▶ play prog 2 after boot	
	sound2	▶ play prog 2 with sound	
	prog3	▶ play prog 3 after boot	
	sound3	▶ play prog 3 with sound	
	dmx hp	on	▶ if enabled, dmx is always takes highest priority
		off	

Addr	1 - 512	Function	
static	red	0-255 ▶ Set a colour, shutter & dimmer for the static stand alone	
	green	0-255	
	blue	0-255	
	white	0-255	
	dimmer	0-255	
	macro	0-255	
	shutter	0-255	
	reset	▶ reset the values for the static stand alone	
	alone	▶ device runs stand alone program	
	master	▶ device runs the stand alone and sends slave sig	
salone	alone	▶ device runs slave signal 1	
	slave 1	▶ device runs slave signal 2	
	slave 2	▶ device runs slave signal 3	
	play	prog 1	▶ Play Prog 1 (while played, speed is displayed and can be edited)
		sound1	▶ Play Prog 1 sound triggered
		prog 2	▶ Play Prog 2 (while played, speed is displayed and can be edited)
		sound2	▶ Play Prog 2 sound triggered
		prog 3	▶ Play Prog 3 (while played, speed is displayed and can be edited)
		sound3	▶ Play Prog 3 sound triggered
		no dmx	prog1
sound1			▶ play prog 1 sound triggered in case of signal loss
prog2			▶ play prog 2 in case of signal loss
sound2			▶ play prog 2 sound triggered in case of signal loss
prog3	▶ play prog 3 in case of signal loss		
sound3	▶ play prog 3 sound triggered in case of signal loss		
lock	off		▶ disable lock
	on		▶ enable device lock
	set		000 ▶ set a password
	on		▶ display is always on
	1 min	▶ display is shut down after 1 minute	
	5 min	▶ display is shut down after 5 minutes	
	60 min	▶ display is shut down after 60 minutes	
	auto	▶ auto	
	dmx	▶ react to dmx after boot	
	static	▶ play static after boot	
boot_mode	prog1	▶ play prog 1 after boot	
	sound1	▶ play prog 1 with sound	
	prog2	▶ play prog 2 after boot	
	sound2	▶ play prog 2 with sound	
	prog3	▶ play prog 3 after boot	
	sound3	▶ play prog 3 with sound	
	dmx hp	on	▶ if enabled, dmx is always takes highest priority
		off	

DIMMER CURVES



DMX MODES

STD-8 STANDARD MODE

CH	FUNCTION
1	Colour Wheel (see Colour Wheel chart / ▶)
2	Red
3	Green
4	Blue
5	White
6	Shutter (see Shutter effects chart / ▶)
7	Dimmer
8	CTO

TL1-5 MODE

CH	FUNCTION
1	Dimmer
2	Red
3	Green
4	Blue
5	White

TL2-6 MODE

CH	FUNCTION
1	Dimmer
2	Red
3	Green
4	Blue
5	White
6	Shutter (see Shutter effects chart / ▶)

RGBW-4 MODE

CH	FUNCTION
1	Red
2	Green
3	Blue
4	White

COLOURWHEEL TABLE

VALUE	FUNCTION
0 - 5	No Function, RGBW Colour mixing
6 - 10	LEE 790-Moroccan Pink
11 - 15	LEE 157-Pink
16 - 20	LEE 332-Special Rose Pink
21 - 25	LEE 328-Follies Pink
26 - 30	LEE 345-Fuchsia Pink
31 - 35	LEE 194-Surprise Pink
36 - 40	LEE 181-Congo Blue
41 - 45	LEE 071-Tokyo Blue
46 - 50	LEE 120-Deep Blue
51 - 55	LEE 079-Just Blue
56 - 60	LEE 132-Medium Blue
61 - 65	LEE 200-Double CT Blue
66 - 70	LEE 161-Slate Blue
71 - 75	LEE 201-Full CT Blue
76 - 80	LEE 202-Half CT Blue
81 - 85	LEE 117-Steel Blue
86 - 90	LEE 353-Lighter Blue
91 - 95	LEE 118-Light Blue
96 - 100	LEE 116-Medium Blue Green
101 - 105	LEE 124-Dark Green
106 - 110	LEE 139-Primary Green
111 - 115	LEE 089-Moss Green
116 - 120	LEE 122-Fern Green
121 - 125	LEE 738-JAs Green
126 - 130	LEE 088-Lime Green
131 - 135	LEE 100-Spring Yellow
136 - 140	LEE 104-Deep Amber
141 - 145	LEE 179-Chrome Orange
146 - 150	LEE 105-Orange
151 - 155	LEE 021-Gold Amber
156 - 160	LEE 778-Mellennium Gold
161 - 165	LEE 135-Deep Golden Amber
166 - 170	LEE 164-Flame Red

COLOURWHEEL ROTATION EFFECTS

VALUE	FUNCTION
171 - 185	Colourwheel rotation forward (fast - slow)
186 - 190	Colourwheel rotation stop
191 - 205	Colourwheel rotation backward (fast - slow)
206 - 210	Colourwheel rotation stop

RANDOM COLOURS

VALUE	FUNCTION
211 - 225	Fast - slow

RGB-3 MODE

CH	FUNCTION
1	Red
2	Green
3	Blue
4	White

EASY-2 MODE

CH	FUNCTION
1	Colour Wheel (see Colour Wheel chart / ▶)
2	Dimmer

SPECIAL CONTROL CHANNEL

VALUE	FUNCTION
00 - 35	Reserved
36 - 40	Remote DMX Address-Low (001-256)
41 - 45	Reserved
46 - 50	Remote DMX Address-High (257-512)
51 - 55	Reserved
56 - 60	Dimmer Speed: Smooth
61 - 65	Dimmer Speed: Fast
66 - 70	Reserved
71 - 75	Dimmer Curve: Linear
76 - 80	Dimmer Curve: Theatrical
81 - 85	Dimmer Curve: Square Law
86 - 90	Dimmer Curve: Inverse Square Law
91 - 175	Reserved
176 - 180	Fixture Reset
181 - 255	Reserved

SHUTTER CHANNEL TABLE

VALUE	FUNCTION
0 - 15	Shutter Closed
16 - 47	Random Strobe (slow - fast)
48 - 79	Random Ramp Up (slow - fast)
80 - 111	Random Ramp Down (slow - fast)
112 - 143	Random Ramp UP & down (slow - fast)
144 - 199	Strobe Pause Ss - 1s (slow - fast)
200 - 239	Strobe 1Hz - 20 Hz (slow - fast)
240 - 255	Shutter Open