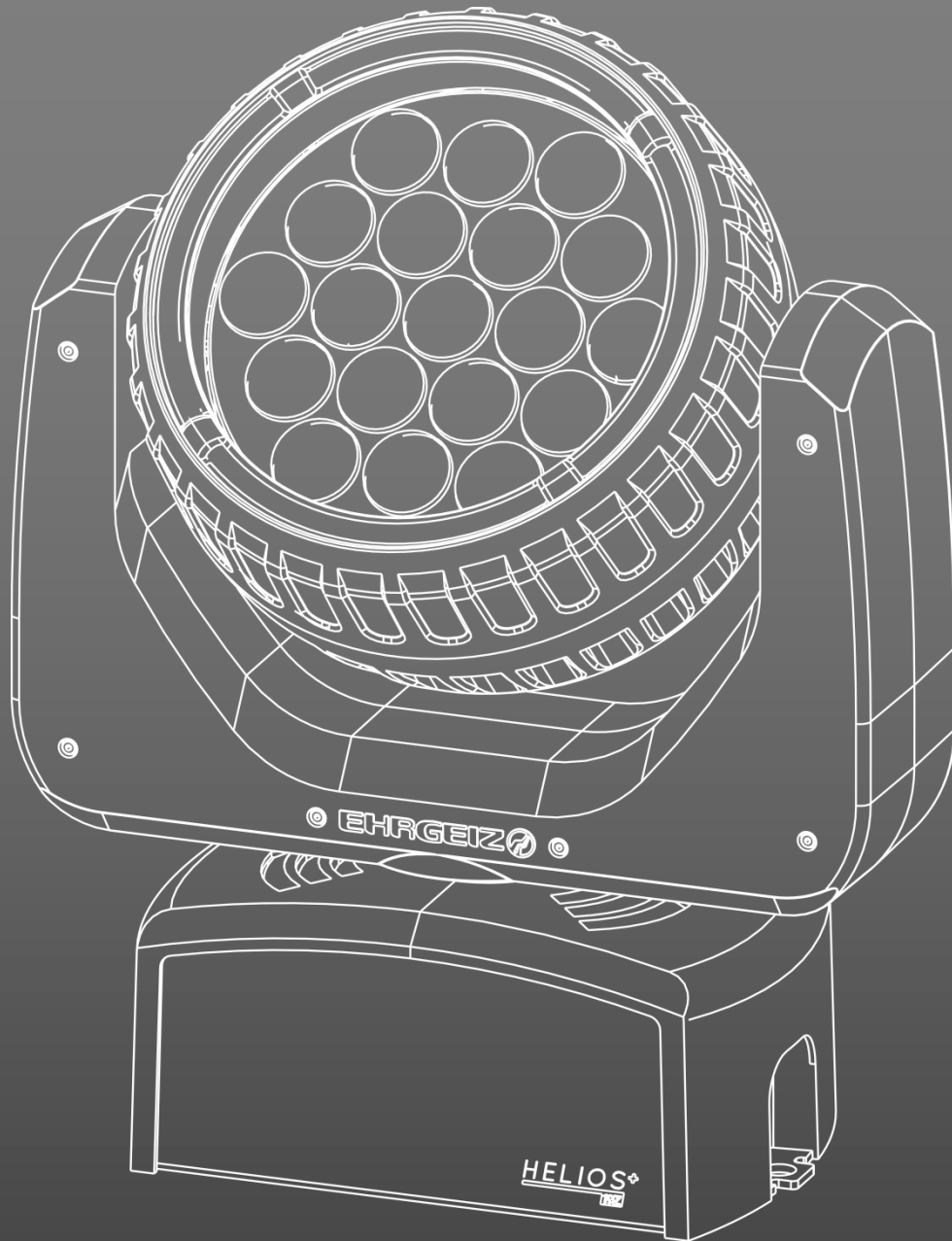
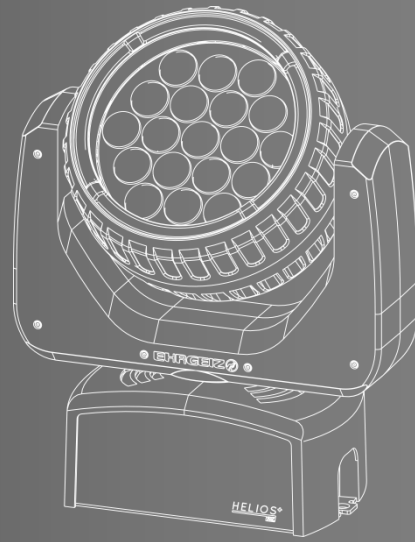


EHRGEIZ 



HELIOS+

USER MANUAL **19Z**



# CONTENTS

Introduction.....	1	
Safety Instructions .....	1	
Delivery Contents .....	3	
Fixture Dimensions.....	3	
Installations .....	4	
Installation On Floor .....	4	
Installation Hanging.....	4	
Safety Attachment.....	4	
Connections.....	5	
Mains .....	5	
DMX .....	6	
DMX Pin Definition:.....	7	
Artnet.....	7	
Operations.....	8	
Menu Control.....	8	
Menu Map.....	9	
Software Updates.....	11	
DMX Modes .....	12	
Standard Mode .....	13	
Advanced Mode.....	14	
Full Control Mode.....	15	
Pixel Mapping Mode .....	17	
Pattern Control Mode.....	18	
Compressed RGBW Mode ....	20	
Services .....	21	
Trouble Shooting .....	21	
Maintenance .....	21	
		Appendix .....
		Specifications.....
		Exploded Drawing .....
		Spareparts .....
		Colour Wheel .....
		Special Control Channel .....
		Shutter Channel .....
		Dimmer Curves .....
		Patterns .....
		Static .....
		Animated.....
		Ring Patterns .....
		Static .....
		Animated.....
		For Your Notes.....

## Introduction

Thank you for your purchase and usage of the Ehrgeiz Helios+ 19z.

You have chosen a reliable product with outstanding features like the unique 8 segment ring. The device is easy to use and is made of high quality components.

Every Ehrgeiz Product is checked before shipping to secure that you receive a great product without compromise. This is not a toy. Our ambitious aim is to give you a reliable working tool.

## Safety Instructions

### IP20 protection rating

The fitting is protected against penetration by solid bodies of over 12,5 mm (0.47") in diameter (first digit 2), but not against dripping water, rain, splashes or jets of water (second digit 0).

### Prevention from electrical shock

Make sure to ground (earth) the fixture electrically. (It's essential to connect the yellow/green conductor to earth)

### Main Connection

Do not apply any AC mains power to the fixture at any other voltage than that specified.

Never let the power-cord come into contact with other cables. Treat the power cord and all connections with the mains with particular caution.

Make sure the power-cord is never crimped or damaged by sharp edges.

### Rigging

Check that all external covers and rigging hardware are securely fastened.

When choosing the installation-location, please make sure that the fixture is not exposed to extreme heat, moisture or dust. There should not be any cables lying around. You endanger yourself and the safety of others.

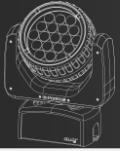
Make sure that the area below the installation place is cordoned off when rigging, de-rigging or servicing the fixture.

If suspending from a rigging structure, fasten the fixture to a rigging clamp with an M10 bolt screwed into the threaded hole in the center of the base of the fixture. The bolt must be screwed at least 20–25mm into the fixture. If the fixture is suspended by any other method, an M10 bolt must be screwed into this hole so that it is at least 20–25mm into the fixture.

Make sure all fixtures are operated and installed by a qualified electrician with the relevant national certifications.

In order to maintain the condition and to ensure a safe operation, it is important for all users to follow the safety instructions and warning notes written in this manual.

Do not operate the fixture with missing or damaged covers, shields or any optical component.



## Introduction → Safety Instructions

Please consider that unauthorized modifications to the device are forbidden due to safety reasons.

If the device is operated in any way that's not described in this manual, the product may suffer damage and the guarantee will become void. Furthermore, misuse may lead to dangers like short-circuit, burns, electric shock, burns due to ultraviolet radiation, lamp explosion, crash, etc.

### Liability

The manufacturer will not accept liability for any resulting damages caused by the non-observance of this manual or any unauthorized modification or repair of the fixture.

### Minimum distance to illuminate objects

The fixture must be positioned at least 0.2m minimum distance to illuminate objects.

### Minimum distance from inflammable materials:

Keep all inflammable materials at least 0.2m from this fixture.

### Positioning:

Allow to place the fitting on an inflammable surface.

Install as described in this manual and add a secondary attachment such as a safety wire that is approved by an official body. The safety wire must comply with EN 60598-2-17 Section 17.6.6 and be capable of bearing a static suspended load ten times the weight of the fixture.

### Maximum ambient temperature of unit location

The maximum ambient temperature of 45°C may not be exceeded.

### Exterior surface temperature:

The exterior of this fixture can reach an untouchable temperature during operation. Avoid contact by persons and materials.

### Maintenance:

This fixture is for professional use only. It is not for household use.

Always unplug the mains for any maintenance.

### Risk of eye injury:

Do not stare directly into the light when it is switch on. (Do not look at LEDs with magnifying glasses, telescopes, binoculars, or similar optical instruments that may concentrate the light output.

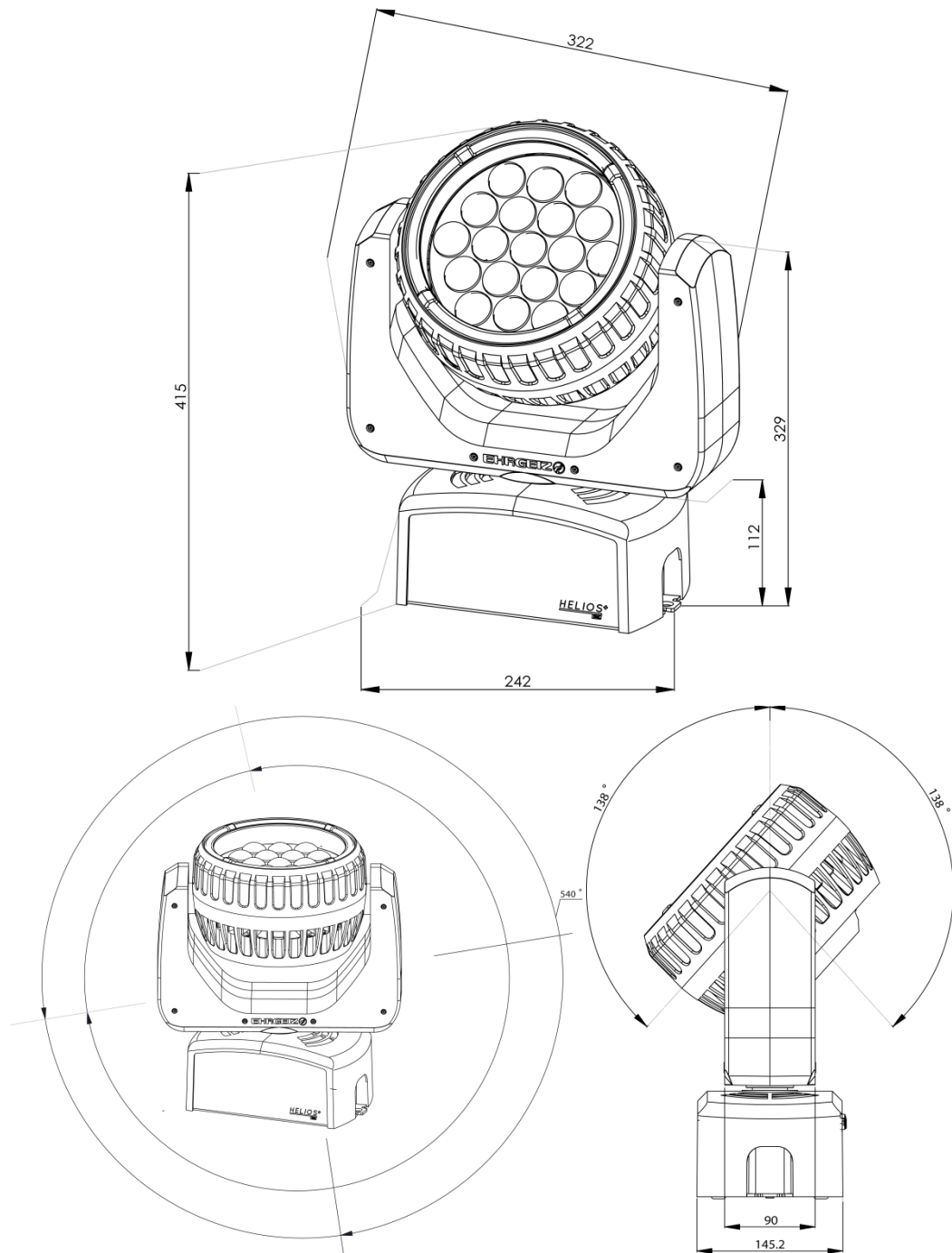
Introduction → Delivery Contents

## Delivery Contents

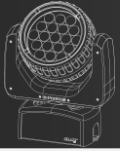
You received your Helios+ 19z with the following content

- Helios+ 19z
- Powercord
- 19x 15W Moving Head
- Powercable with Neutrik powerCON plug

## Fixture Dimensions



Dimensions in mm

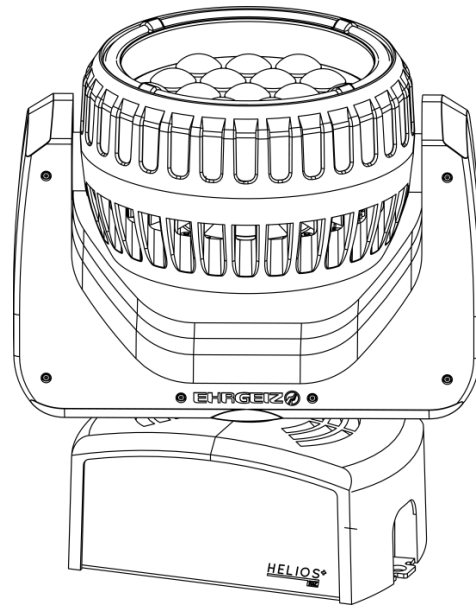


## Installations

Your Helios+ 19z can be installed in every kind of following positions. Please see the explanations and rely to the Instructions for a safe operation and secure handling.

### Installation On Floor

You can place the Helios+ 19z on the floor. Please make sure the surface is plane and the reliability of the floor is sufficient.

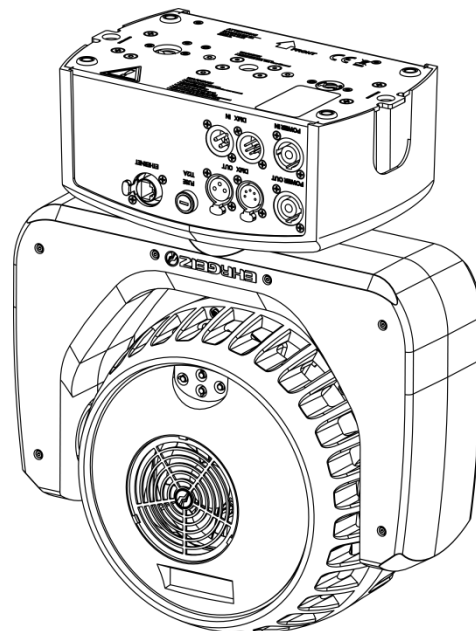


### Installation Hanging

You can attach the Helios+ 19z to a Truss or Pipe facing down.

If you wish to install the fixture using a Clamp, make sure that the length of the M10 bolt does not exceed 25mm!

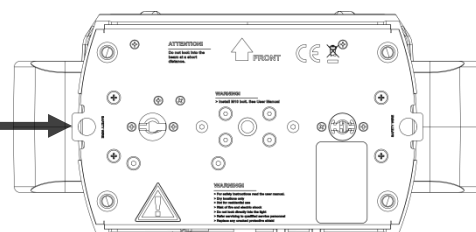
When installing the fixtures one to another the distance between the middle of the installation clamps has to be more than 350 mm.



### Safety Attachment

Please attach the Safety rope to one of the two safety eyelets on the base of the housing.

Safety

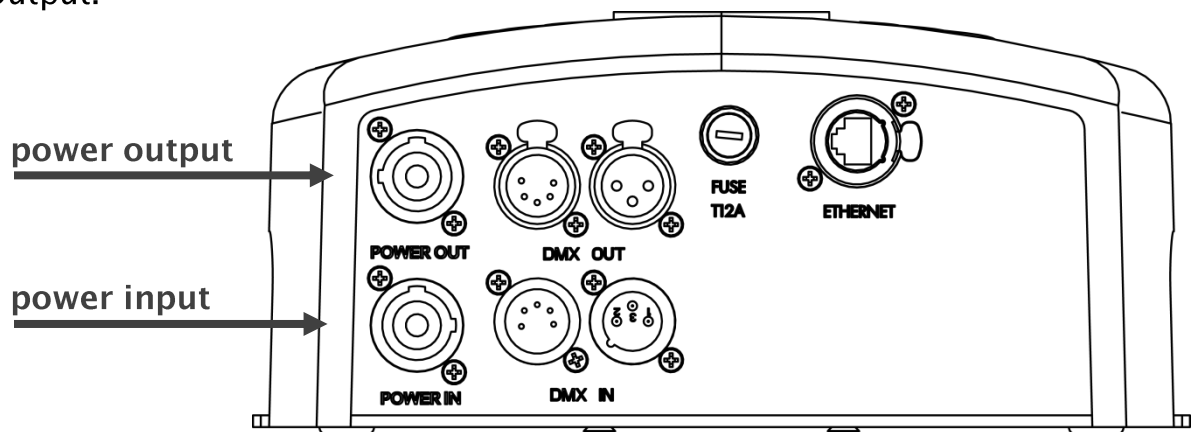


## Connections

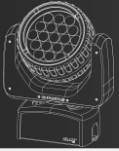
### Mains

The connection of the power supply has to be done by qualified personnel only. Do not connect the Helios+ 19z if you are not able to survey the consequences.

The Helios+ 19z is equipped with original NEUTRIK powerCON In- and Output.



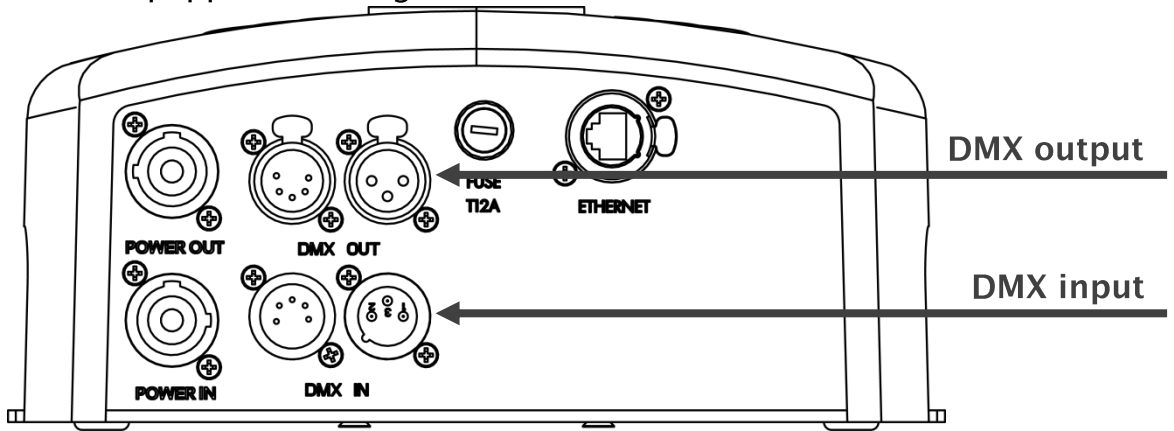
Do not try to connect another type of plug than an original NEUTRIK powerCON. Do not use any force to connect the powerCON plug. You can use the outlet for connecting additional devices. The internal wiring is done with a cable cross section of 2,5mm<sup>2</sup>.



## Connections → DMX

### DMX

Your Helios+ 19z is equipped with original NEUTRIK XLR connectors for In- and Output.



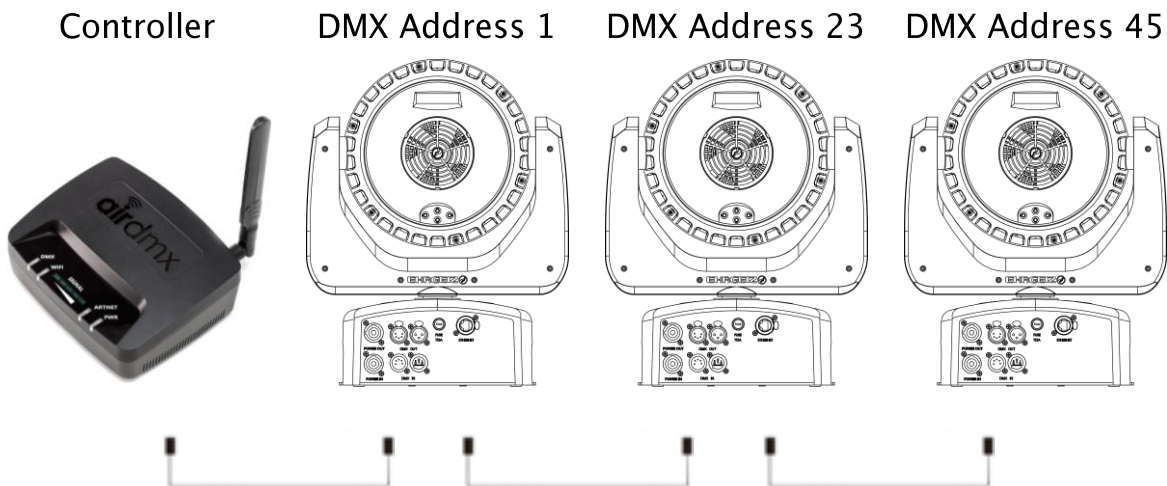
We recommend the use of high quality XLR connectors like original NEUTRIK. Please use real DMX cables with a surge impedance of 110 Ω.

You can choose one input and output 3 or 5 pin; please don't use the device as a splitter.

Please notice that the USITT DMX Standard does allow the use a max of 32 DMX fixtures in one line. You should terminate the signal by a 120 Ω resistor.

In Standard mode the Helios+ 19z uses 22 DMX channels.

Connect the devices and increase the value of the DMX channel by 22 from one device to another



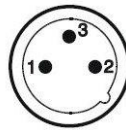


Connections → DMX Pin Definition:

### DMX Pin Definition:



1: Ground  
2: Signal -  
3: Signal +



### Artnet

Your Helios+ 19z is equipped with an Artnet input.

Although there are a lot of possibilities for this protocol the “normal” setup is not that complicated.

According to the standard the Address should be in a range of 2.X.X.X or 10.X.X.X

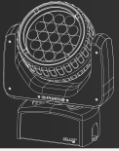
Just set your controller to an IP Address like 2.0.0.XXX choose another address for your Helios+ 19z devices. Keep in mind that none of the devices should have the same IP address, even if you would like them to behave the same way.

Set the controller and your Helios+ 19z to the same Subnet and Universe. Patch your Console and select the same DMX start address on the device.

For more information on using Artnet see the Artistic License Page:

<http://www.artisticlicence.com/>

You will be able to find a lot of information, as well as some useful software tools for Network analysis like the DMX-Workshop there.

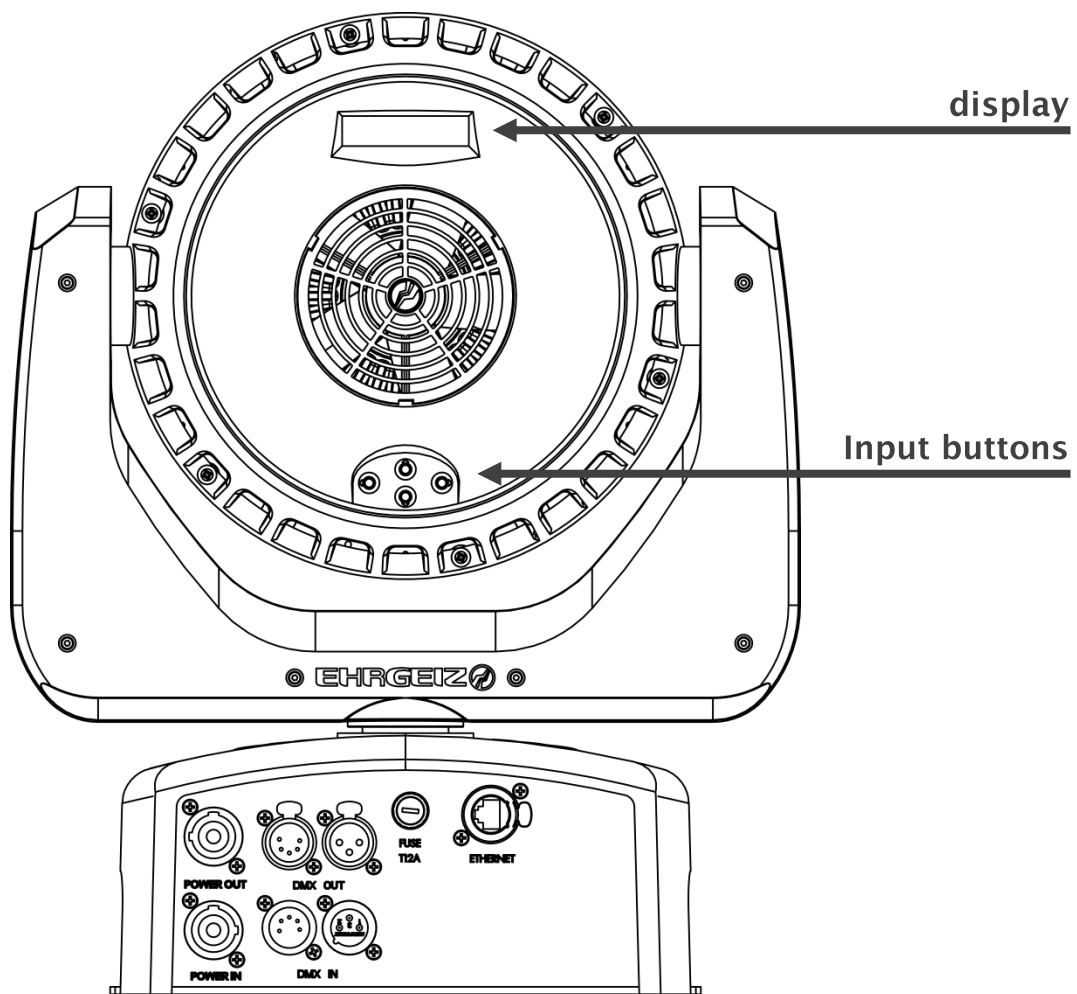


## Operations

### Menu Control

Your Helios+ 19z uses an innovative way to change the menu settings.

The display, as well as the input buttons, are aligned in the head of the device. This allows you to do your settings in every way you are able to approach the device. Simply press any button 2 times and the motors are free. Do your Settings and the motors will go back to controlled mode after 10 seconds. (Motor free can be disabled in the Personality Settings)



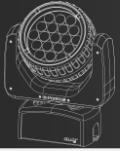
The Menu of the Helios+ 19z is very intuitive. You will find a menu map on the following pages. The four buttons are used to scroll the values, select a setting or hop back in the menu structure:

- ◀ Go back in the menu structure or leave value as it is
- ▶ Go forward in the menu structure or confirm the selected value
- ▲▼ Scroll up / down in the menu structure or scroll the selected value

Operations → Menu Map

### Menu Map

DMX ADDRESS	Address + / -	1 - 512	▶ Choose your DMX address		
	Ethernet Setup	Ethernet Enable	ON / Off	▶ Enable Artnet input	
		IP Address	Default IP	▶ 2.0.0.1	
			Custom IP	▶ set your own IP	
			Netmask	▶ set Netmask	
		Subnet	▶ Set Subnet 0 - 15		
Universe	▶ Set Universe 0 - 15				
Personality	DMX Mode	Standard Mode	▶ 22 channels with most effects included		
		Advanced Mode	▶ 31 channels with 16 bit colour mixing		
		Full Control	▶ 165 channels with RGBW control for every pixel & Ring		
		Pixel Mapping	▶ 137 channels Pixel Mapping for Main LED's only		
		Compressed RGBW	▶ 15 channels with RGBW control only		
		Pattern Control	▶ 59 channels with multiple Pattern layers for main LED's & Ring		
	Remote DMX Add.	On	▶ Enable the Remote DMX addressing		
		Off			
	P / T Setting	P / T Speed	Normal / Fast / Slow	▶ choose PAN / TILT speed	
		PAN Invert	On / Off	▶ invert the PAN control	
		Tilt Invert	On / Off	▶ invert the TILT control	
		Feedback	On / Off	▶ Turn off the error correction	
		P / T Release	On / Off	▶ release the P/T motors while in setup	
	Dimmer Curve	Linear	▶ Set up the Dimmer Curve; see Appendix / page VI		
		Square Law			
		Inverse Square			
		Theatrical			
	Dimmer Speed	Fast	▶ Set up the speed of the dimmer		
		Smooth			
	Cooling Mode	Auto	▶ Regulate the fan according the fixtures temp.		
		Standard	▶ Medium Fan speed		
		Silent	▶ light output will lower if device get's too warm		
		High Power	▶ Fan always spins at highest level		
MIC Enable	Disable / Enable	▶ Enable the built-in Mic			
Mic Sensitivity	Low	▶ Set the sensitivity for "Sound Active Mode"			
	Normal				
	High				
Reset via DMX	On	▶ Choose if device can be resetted via DMX			
	Off				



## Operations → Menu Map

	Display Setting	Intensity	0 - 10	▶ set Display intensity	
		Shutoff Time	2m - 60 m / off	▶ set time when display light turns off	
		No Signal Flash	On / Off	▶ display flashes if no DMX input	
Stand Alone	Test Sequences	Dynamic Mode	Run / Cancel	▶ Test Sequence without movement	
		Static Mode	Run / Cancel	▶ Test Sequence including movement	
	Master / Slave	Alone		▶ Set unit to Alone (No Master or Slave)	
		Master		▶ Set unit to Master (in Program Mode)	
		Slave		▶ Set unit to slave (in Program Mode)	
	Program Edit	Program 1	Prog 1 Max Step (01 - 30)	Select Step	01 - 30 ▶ Select amount of Steps
				Capture DMX	▶ Capture and Safe the actualDMX input
				Hold Time	▶ Select hold time in seconds (0 - 999)
				Fade Time	▶ Select fade time in seconds (0 - 999)
		Program 2		▶ see above	
	Program 3		▶ see above		
	Program Play	Program 1	No / Yes	▶ Play Program 1	
		Program 2	No / Yes	▶ Play Program 2	
Program 3		No / Yes	▶ Play Program 3		
Program All		No / Yes	▶ Play Program 1, 2 & 3 in a Loop		
Service	Reset	Reset All	No / Yes	▶ Reset all Motors	
		PAN / TILT	No / Yes	▶ Reset PAN / TILT	
	Factory default	Load	No / Yes	▶ Set device back to factory defaults	
Information	Fixture Time	Resetable	XXX hours	▶ see the resettable fixture time	
		Total	XXX hours	▶ see total working time of the device	
		Clear resetable	Clear / Cancel	▶ clear the resettable fixture time	
	Fixture Temp	Head LED	Actual		▶ see temp. measured at LED's
			Max		▶ see max. temp. till last reset
			Reset	No / Yes	▶ reset max. temp.
		Head Driver	Actual		▶ see temp. measured at Driver Board
			Max		▶ see max. temp. till last reset
			Reset	No / Yes	▶ reset max. temp.
	Version	V. XXXX.XX	▶ See the installed Firmware Version		
Serial Number	XXXXXXX	▶ See the Serial Number of this device			
DMX Live	Refresh Rate	XX Hz	▶ See the refresh rate of the received DMX signal		
	PAN	0 - 255	▶ input value of PAN channel		
	PAN Fine	0 - 255	▶ input value of PAN fine channel		
	TILT	0 - 255	▶ input value of TILT channel		
	TILT Fine	0 - 255	▶ input value of TILT fine channel		
	Control	0 - 255	▶ input value of control channel		

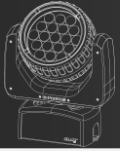
## Operations → Software Updates

CTO	0 - 255	▶ input value of CTC channel
Color Wheel	0 - 255	▶ input value of Color Wheel channel
Red	0 - 255	▶ input value of Red channel
Green	0 - 255	▶ input value of Green channel
Blue	0 - 255	▶ input value of Blue channel
White	0 - 255	▶ input value of White channel
Dimmer	0 - 255	▶ input value of Dimmer channel
Strobe	0 - 255	▶ input value of Strobe channel

## Software Updates

Your Helios+ 19z can be updated via the XLR connection, so no need to open it.

If you experience issues which could probably be solved by an Firmware Update please contact your Ehrgeiz Dealer for further instructions.



## DMX Modes

You can set up your Helios+ 19z in 6 different DMX Modes:

**Standard Mode**

Page 13; Uses 22 DMX channels

**Advanced Mode**

Page 14; Uses 31 DMX channels

**Full Control Mode**

Page 15; Uses 165 DMX channels

**Pixel Mapping Mode**

Page 17; Uses 137 DMX channels

**Pattern Control Mode**

Page 18; Uses 59 DMX channels

**Compressed RGBW Mode**

Page 20; Uses 15 DMX channels

Operations → DMX Modes

**Standard Mode**

CH	Value	Function
<b>1</b>	0 – 255	<b>Pan</b>
<b>2</b>	0 – 255	<b>Pan fine</b>
<b>3</b>	0 – 255	<b>Tilt</b>
<b>4</b>	0 – 255	<b>Tilt fine</b>
<b>5</b>	0 – 255	<b>Colour Wheel</b> (see Colour Wheel chart / Appendix Page IV)
<b>6</b>	0 – 255	<b>Red</b>
<b>7</b>	0 – 255	<b>Green</b>
<b>8</b>	0 – 255	<b>Blue</b>
<b>9</b>	0 – 255	<b>White</b>
<b>10</b>	0 – 255	<b>Shutter effects</b> (see Shutter effects chart / Appendix Page VI)
<b>11</b>	0 – 255	<b>Dimmer</b>
<b>12</b>	0 – 255	<b>CTO</b>
<b>13</b>	0 – 255	<b>Zoom</b>
<b>14</b>	0 – 255	<b>LED Ring Colour wheel</b> (see Colour Wheel chart / App. Page IV)
<b>15</b>	0 – 255	<b>LED Ring Shutter</b> (see Shutter effects chart / Appendix Page VI)
<b>16</b>	0 – 255	<b>LED Ring Dimmer</b>
<b>17</b>	0 – 255	<b>Pattern</b> (see Pattern effects table / Appendix Page VII)
<b>18</b>	0 – 255	<b>Pattern Speed</b>
<b>19</b>	0 – 255	<b>LED Ring Pattern</b>
<b>20</b>	0 – 255	<b>LED Ring Pattern Speed</b>
<b>21</b>	0 – 255	<b>Control</b> (see Control channel table / Appendix Page V)
<b>22</b>	0 – 255	<b>Remote DMX address</b>

**Advanced Mode**

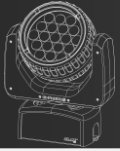
CH	Value	Function
1	0 - 255	<b>Pan</b>
2	0 - 255	<b>Pan fine</b>
3	0 - 255	<b>Tilt</b>
4	0 - 255	<b>Tilt fine</b>
5	0 - 255	<b>Colour Wheel</b> (see Colour Wheel chart / Appendix Page IV)
6	0 - 255	<b>Red</b>
7	0 - 255	<b>Red fine</b>
8	0 - 255	<b>Green</b>
9	0 - 255	<b>Green fine</b>
10	0 - 255	<b>Blue</b>
11	0 - 255	<b>Blue fine</b>
12	0 - 255	<b>White</b>
13	0 - 255	<b>White fine</b>
14	0 - 255	<b>Shutter effects</b> (see Shutter effects chart / Appendix Page VI)
15	0 - 255	<b>Dimmer</b>
16	0 - 255	<b>Dimmer fine</b>
17	0 - 255	<b>CTO</b>
18	0 - 255	<b>Zoom</b>
19	0 - 255	<b>Zoom fine</b>
20	0 - 255	<b>LED Ring colour wheel</b> (see Colour Wheel chart / App. Page IV)
21	0 - 255	<b>LED Ring red</b>
22	0 - 255	<b>LED Ring green</b>
23	0 - 255	<b>LED Ring blue</b>
24	0 - 255	<b>LED Ring Shutter</b> (see Shutter effects chart / Appendix Page VI)
25	0 - 255	<b>LED Ring Dimmer</b>
26	0 - 255	<b>Pattern</b> (see Pattern effects table / Appendix Page VII)
27	0 - 255	<b>Pattern Speed</b>
28	0 - 255	<b>LED Ring Pattern</b>
29	0 - 255	<b>LED Ring Pattern Speed</b>
30	0 - 255	<b>Control</b> (see Control channel table / Appendix Page V)
31	0 - 255	<b>Remote DMX address</b>



Operations → DMX Modes

**Full Control Mode**

CH	Value	Function
1	0 – 255	Pan
2	0 – 255	Pan fine
3	0 – 255	Tilt
4	0 – 255	Tilt fine
5	0 – 255	Colour Wheel (see Colour Wheel chart / Appendix Page IV)
6	0 – 255	Red
7	0 – 255	Red fine
8	0 – 255	Green
9	0 – 255	Green fine
10	0 – 255	Blue
11	0 – 255	Blue fine
12	0 – 255	White
13	0 – 255	White fine
14	0 – 255	Shutter effects (see Shutter effects chart / Appendix Page VI)
15	0 – 255	Dimmer
16	0 – 255	Dimmer fine
17	0 – 255	CTO
18	0 – 255	Zoom
19	0 – 255	Zoom fine
20	0 – 255	LED Ring colour wheel (see Colour Wheel chart / App. Page IV)
21	0 – 255	LED Ring red
22	0 – 255	LED Ring green
23	0 – 255	LED Ring blue
24	0 – 255	LED Ring Shutter (see Shutter effects chart / Appendix Page VI)
25	0 – 255	LED Ring Dimmer
26	0 – 255	LED 1 Red
27	0 – 255	LED 1 Green
28	0 – 255	LED 1 Blue
29	0 – 255	LED 1 White
30	0 – 255	LED 1 Shutter
31	0 – 255	LED 1 Dimmer
..	0 – 255	LED X Red
..	0 – 255	LED X Green
..	0 – 255	LED X Blue
..	0 – 255	LED X White
..	0 – 255	LED X Shutter
..	0 – 255	LED X Dimmer
134	0 – 255	LED 19 Red
135	0 – 255	LED 19 Green
136	0 – 255	LED 19 Blue
137	0 – 255	LED 19 White
138	0 – 255	LED 19 Shutter
139	0 – 255	LED 19 Dimmer
140	0 – 255	LED Ring Segment 1 red
141	0 – 255	LED Ring Segment 1 green



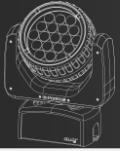
## Operations → DMX Modes

CH	Value	Function
142	0 – 255	LED Ring Segment 1 blue
..	0 – 255	LED Ring Segment X red
..	0 – 255	LED Ring Segment X green
..	0 – 255	LED Ring Segment X blue
161	0 – 255	LED Ring Segment 8 red
162	0 – 255	LED Ring Segment 8 green
163	0 – 255	LED Ring Segment 8 blue
164	0 – 255	Control (see Control channel table / Appendix Page V)
165	0 – 255	Remote DMX address

Operations → DMX Modes

**Pixel Mapping Mode**

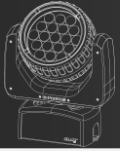
CH	Value	Function
1	0 – 255	Pan
2	0 – 255	Pan fine
3	0 – 255	Tilt
4	0 – 255	Tilt fine
5	0 – 255	Colour Wheel (see Colour Wheel chart / Appendix Page IV)
6	0 – 255	Red
7	0 – 255	Green
8	0 – 255	Blue
9	0 – 255	White
10	0 – 255	Shutter effects (see Shutter effects chart / Appendix Page VI)
11	0 – 255	Dimmer
12	0 – 255	CTO
13	0 – 255	Zoom
14	0 – 255	LED Ring colour wheel (see Colour Wheel chart / App. Page IV)
15	0 – 255	LED Ring red
16	0 – 255	LED Ring green
17	0 – 255	LED Ring blue
18	0 – 255	LED Ring Shutter (see Shuttereffects chart / Appendix Page VI)
19	0 – 255	LED Ring Dimmer
20	0 – 255	LED 1 Red
21	0 – 255	LED 1 Green
22	0 – 255	LED 1 Blue
23	0 – 255	LED 1 White
24	0 – 255	LED 1 Shutter
25	0 – 255	LED 1 Dimmer
..	0 – 255	LED X Red
..	0 – 255	LED X Green
..	0 – 255	LED X Blue
..	0 – 255	LED X White
..	0 – 255	LED X Shutter
..	0 – 255	LED X Dimmer
128	0 – 255	LED 19 Red
129	0 – 255	LED 19 Green
130	0 – 255	LED 19 Blue
131	0 – 255	LED 19 White
132	0 – 255	LED 19 Shutter
133	0 – 255	LED 19 Dimmer
134	0 – 255	LED Ring Pattern
135	0 – 255	LED Ring Pattern Speed
136	0 – 255	Control (see Control channel table / Appendix Page V)
137	0 – 255	Remote DMX address

**Pattern Control Mode**

CH	Value	Function
1	0 - 255	<b>Pan</b>
2	0 - 255	<b>Pan fine</b>
3	0 - 255	<b>Tilt</b>
4	0 - 255	<b>Tilt fine</b>
5	0 - 255	<b>Colour Wheel</b> (see Colour Wheel chart / Appendix Page IV)
6	0 - 255	<b>Red</b>
7	0 - 255	<b>Green</b>
8	0 - 255	<b>Blue</b>
9	0 - 255	<b>White</b>
10	0 - 255	<b>Shutter effects</b> (see Shutter effects chart / Appendix Page VI)
11	0 - 255	<b>Dimmer</b>
12	0 - 255	<b>CTO</b>
13	0 - 255	<b>Zoom</b>
14	0 - 255	<b>LED Ring colour wheel</b> (see Colour Wheel chart / App. Page IV)
15	0 - 255	<b>LED Ring red</b>
16	0 - 255	<b>LED Ring green</b>
17	0 - 255	<b>LED Ring blue</b>
18	0 - 255	<b>LED Ring Shutter</b> (see Shutter effects chart / Appendix Page VI)
19	0 - 255	<b>LED Ring Dimmer</b>
20	0 - 255	<b>Pattern 1 Red</b>
21	0 - 255	<b>Pattern 1 Green</b>
22	0 - 255	<b>Pattern 1 Blue</b>
23	0 - 255	<b>Pattern 1 White</b>
24	0 - 255	<b>Pattern 1 Shutter</b>
25	0 - 255	<b>Pattern 1 Dimmer</b>
26	0 - 255	<b>Pattern 1 Pattern</b>
27	0 - 255	<b>Pattern 1 Pattern Speed</b>
28	0 - 255	<b>Pattern 2 Red</b>
29	0 - 255	<b>Pattern 2 Green</b>
30	0 - 255	<b>Pattern 2 Blue</b>
31	0 - 255	<b>Pattern 2 White</b>
32	0 - 255	<b>Pattern 2 Shutter</b>
33	0 - 255	<b>Pattern 2 Dimmer</b>
34	0 - 255	<b>Pattern 2</b>
35	0 - 255	<b>Pattern 2 Pattern Speed</b>
36	0 - 255	<b>Pattern 3 Red</b>
37	0 - 255	<b>Pattern 3 Green</b>
38	0 - 255	<b>Pattern 3 Blue</b>
39	0 - 255	<b>Pattern 3 White</b>
40	0 - 255	<b>Pattern 3 Shutter</b>
41	0 - 255	<b>Pattern 3 Dimmer</b>
42	0 - 255	<b>Pattern 3 Pattern</b>
43	0 - 255	<b>Pattern 3 Pattern Speed</b>
44	0 - 255	<b>LED Ring Pattern 1 Red</b>
45	0 - 255	<b>LED Ring Pattern 1 Green</b>

## Operations → DMX Modes

46	0 - 255	LED Ring Pattern 1 Blue
47	0 - 255	LED Ring Pattern 1 Shutter
48	0 - 255	LED Ring Pattern 1 Dimmer
49	0 - 255	LED Ring Pattern 1 Pattern
50	0 - 255	LED Ring Pattern 1 Pattern Speed
51	0 - 255	LED Ring Pattern 2 Red
52	0 - 255	LED Ring Pattern 2 Green
53	0 - 255	LED Ring Pattern 2 Blue
54	0 - 255	LED Ring Pattern 2 Shutter
55	0 - 255	LED Ring Pattern 2 Dimmer
56	0 - 255	LED Ring Pattern 2 Pattern
57	0 - 255	LED Ring Pattern 2 Pattern Speed
58	0 - 255	Control (see Control channel table / Appendix Page V)
59	0 - 255	Remote DMX address

**Compressed RGBW Mode**

CH	Value	Function
1	0 - 255	<b>Pan</b>
2	0 - 255	<b>Pan fine</b>
3	0 - 255	<b>Tilt</b>
4	0 - 255	<b>Tilt fine</b>
5	0 - 255	<b>Colour Wheel</b> (see Colour Wheel chart / Appendix Page IV)
6	0 - 255	<b>Red</b>
7	0 - 255	<b>Green</b>
8	0 - 255	<b>Blue</b>
9	0 - 255	<b>White</b>
10	0 - 255	<b>Shutter effects</b> (see Shutter effects chart / Appendix Page VI)
11	0 - 255	<b>Dimmer</b>
12	0 - 255	<b>Zoom</b>
13	0 - 255	<b>LED Ring Colour wheel</b> (see Colour Wheel chart / App. Page IV)
14	0 - 255	<b>LED Ring Shutter</b> (see Shutter effects chart / Appendix Page VI)
15	0 - 255	<b>LED Ring Dimmer</b>

## Services

### Trouble Shooting

Problem	Causes	Solutions
<b>No Display / Not switched on</b>	No power to fixture	<p>Check AC mains power and connections</p> <p>Inspect connections and cables. Correct poor connections. Repair or replace damaged cables</p> <p>Check the power supply voltage.</p>
	Incorrect fixture DMX addressing	Check the fixture is assigned to correct DMX address (See Page 9)
	Incorrect DMX mode	Check fixture is set to correct DMX mode (See Page 12)
<b>Fixture does not respond to DMX correctly.</b>	Fault on data link	check for the data link is correctly linked from the DMX source if all cables are in good condition
	Other device on DMX link defective.	Unplug XLR IN and OUT connectors and connect them directly together to bypass one fixture at a time until normal operation is regained
	Data transmission lines should be terminated.	Insert termination plug in OUTPUT of the last fixture on the link.
	Faulty DMX link	Run built-in test mode or OBD control mode to verify if LEDs are illuminated
<b>LC-Display works but no light outputs can be generated.</b>	Broken parts / wires / LEDs	Have fixtures serviced by an Ehrgeiz service technician
	Fixture is set to Auto cooling mode and fixture is still cool	<p>Set the cooling mode to other modes other than Auto mode (See Menu Map on Page 9)</p> <p>Set the fixture to generate light output, the fan will start to work when temperature reached 35 deg. Celsius (95 deg. Fahrenheit)</p>
<b>Cooling Fan does not spin*.</b>	Broken Fans	Have the fan replaced by an Ehrgeiz service technician

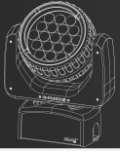
### Maintenance

There are no serviceable parts inside your Helios+ 19z. If problems occur contact your Ehrgeiz dealer or an qualified Ehrgeiz service technician.

Use a slightly moist and smooth cloth to clean the device. Do not use any aggressive detergents.

If you want to replace the fuse make sure to use a fuse of the recommended type. Do not use any other kind of fuse as this might result in a damage of the device or even serious injuries of persons.

We are sure you will have a sophisticated experience with your Helios+ 19z.



Services → Maintenance



## Appendix

### Specifications

#### Light source

- 19x 15 Watt class RGBW LED
- Rated lumen output : 7.600 lm
- LED Life Expectancy: approx. 50.000 hours

#### Optical system

- ConsistentColor™ Zoom Optics
- Rapid Zoom with 0.8s maximum speed
- Beam angle 11°– 58°

#### Functions

- RGBW, 8 or 16 bit color mixing
- SteadyColor™ Dimming
- Seamless CTO
- Virtual color wheel with 39 colors including whites
- (2.700 K, 3.200 K, 4.200 K, 5.600 K, 7.200 K and 8.000 K)
- Individual LED colors control
- Individual shutter/dimmer for each LED
- Pattern effects with variable speed
- High resolution dimmer 0–100% Selectable dimmer curves
- Strobe with variable speed (max. 20Hz )
- Pre-programmed random strobe & pulse effects

#### Movement

- High precision 2 phase stepping motors
- 16-bit Pan/Tilt control
- Position feedback
- Pan and Tilt movement range: 540°/270°

#### Thermal

- Maximum ambient temperature: 45° C (113° F)
- Intelligent fan control
- 4 fan modes

#### Control and programming

- Setting & Addressing: 2x 16 characters LC display & 4 buttons
- Protocols: USITT DMX-512, Art-Net 3
- Control channels: 15, 22, 31, 59, 137, 165
- 6 DMX protocol modes
- 3-editable programs, each up to 25 steps
- Stand-alone mode
- Art-Net Node function
- Firmware update via DMX-line
- DMX In/Out: Neutrik XLR-3, XLR-5
- Power In/Out: Neutrik powerCON®
- Art-Net : Neutrik etherCON®

#### Electrical Specification

- Electronic switching power supply with auto-sensing
- Input voltage: 100–240V AC, 50/60 Hz
- Max. power consumption: 350 W
- Fuse protection : T10A (6.3x 32 mm)

#### Mechanical Specification

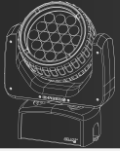
- Height: 398.5 mm (15.68")
- Width: 320 mm (12.59")
- Depth: 158 mm (6.22")
- Weight: 7.4 kg (16.31 lbs)

#### Rigging

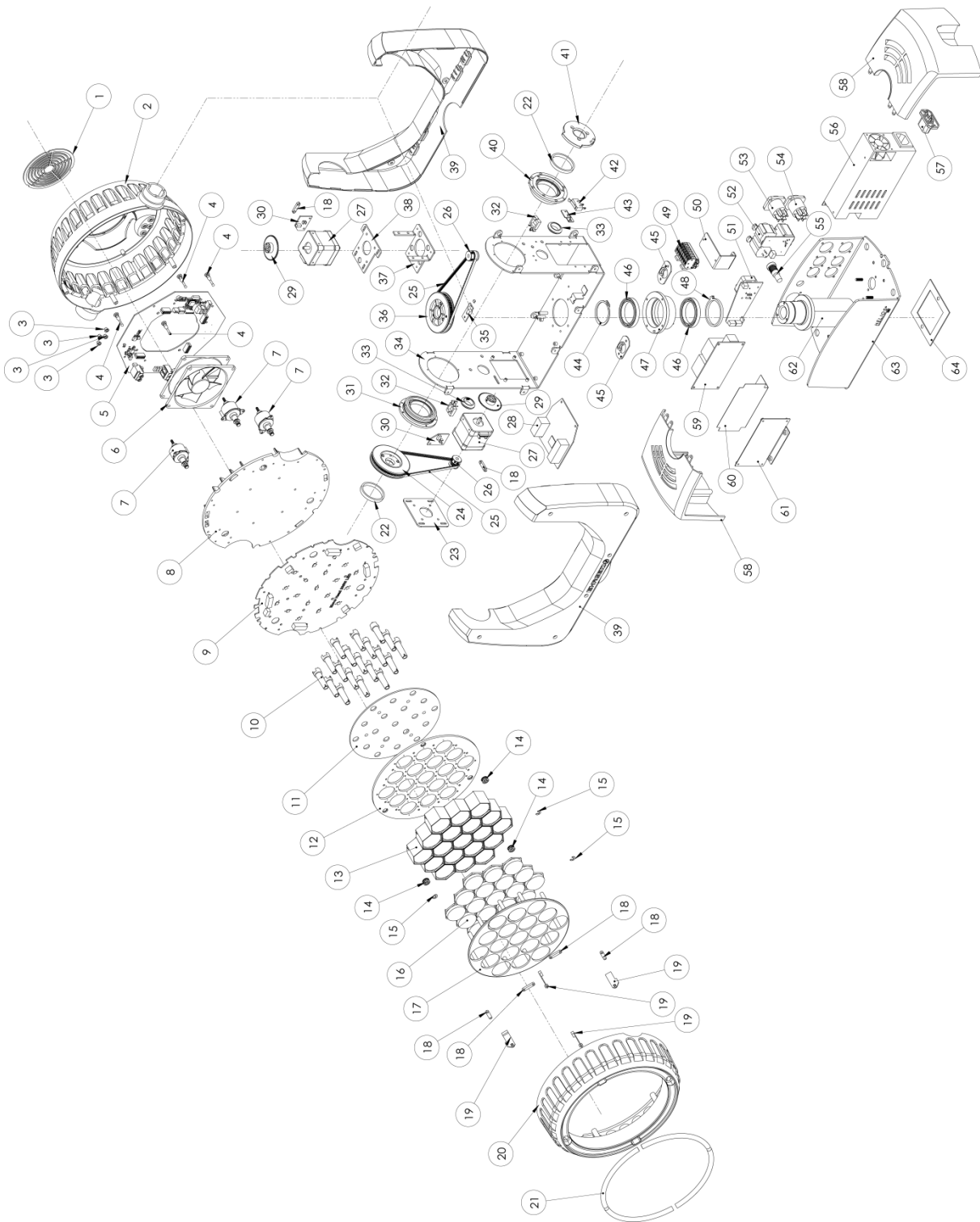
- Centered M10 insert nut
- Two 1/4th turn mounting inserts for omega bracket
- 2 attachment points for safety wire

#### Available Accessories

- Case for 6x Helios+19Z
- Omega Bracket for Helios+ 19Z



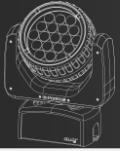
# Exploded Drawing



## Appendix → Spareparts

### Spareparts

#	Description (EN)	Q'TY	Item No	#	Description (EN)	Q'TY	Item No
1	Fan grille–fixture top	1	111068	33	Snap bushing KSS–GMQ–2015	2	111087
2	Fixture head housing–base	1	111069	34	Fixture arm bracket	1	111089
3	Input button rubber cap	4	106914	35	Hall sensor board	1	105720
4	Head cooling fan rubber rivet	4	106915	36	65 teeth timing gear	2	106924
5	Control & driver board	1	105721	37	Stepping motor bracket–X axle	1	111048
6	Head cooling fan 12V	1	111070	38	Adjustable belt–tension mount	1	111047
7	Z axle motor	3	111071	39	Fixture housing–arm	2	111099
8	Heat sink	1	111072	40	Bearing seat ass'y–Y axle left	1	111044
9	LED board	1	105718	41	Y axle angular plate limiter	1	111045
10	Light guide ass'y	19	111073	42	Limit switch	1	111043
11	Light guide holder plate	1	111074	43	Limit switch mount	1	111042
12	Lens holder plate (base)	1	111075	44	C type retaining ring	1	111049
13	Lens holder	19	111078	45	1/4 Turn fast lock mount	2	111090
14	Z axle motor shaft bushing	3	111076	46	X–axle bearing	2	111050
15	E type retaining ring (4mm)	3	111077	47	Bearing seat ass'y–X axle	1	111051
16	Optical lens	19	111079	48	Reset collar–X axle	1	111053
17	Lens holder plate (top)	1	111080	49	7P terminal block	1	111091
18	Cable guide	6	111081	50	Terminal block mount	1	111092
19	Ring LED board	4	111082	51	Artnet control board	1	105723
20	Fixture head housing–top	1	111083	52	3 & 5–Pin XLR Board	1	105724
21	Ring light guide	4	111084	53	Neutrik powerCON–Output	1	111057
22	Arm bearing collar	2	111034	54	Neutrik powerCON–Input	1	111055
23	Stepping motor bracket–Y axle	1	111086	55	Fuse holder	1	111056
24	65 teeth timing gear	2	106924	56	Power supply (400W)	1	111097
25	Timing belt 375L	2	111085	57	AC socket	1	111098
26	13 teeth timing gear	2	111029	58	Fixture housing–base	2	111094
27	Stepping motor–Helios series	2	111032	59	Power supply (120W)	1	111095
28	Motor control board	1	105722	60	Isolation Pad for PSU	1	114010
29	Encoder	2	111033	61	Power supply bracket	1	111058
30	Encoder board	2	105715	62	Center shaft	1	111093
31	Bearing seat ass'y–Y axle right	1	111035	63	Fixture base housing	1	111096
32	Cable tie mount	2	111088	64	Fixture clamp insert–Helios	1	111063



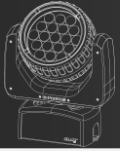
## Colour Wheel

Value	Function
0 - 5	No Function, RGBW Colour mixing
6 - 10	LEE 790-Moroccan Pink
11 - 15	LEE 157-Pink
16 - 20	LEE 332-Special Rose Pink
21 - 25	LEE 328-Follies Pink
26 - 30	LEE 345-Fuchsia Pink
31 - 35	LEE 194-Surprise Pink
36 - 40	LEE 181-Congo Blue
41 - 45	LEE 071-Tokyo Blue
46 - 50	LEE 120-Deep Blue
51 - 55	LEE 079-Just Blue
56 - 60	LEE 132-Medium Blue
61 - 65	LEE 200-Double CT Blue
66 - 70	LEE 161-Slate Blue
71 - 75	LEE 201-Full CT Blue
76 - 80	LEE 202-Half CT Blue
81 - 85	LEE 117-Steel Blue
86 - 90	LEE 353-Lighter Blue
91 - 95	LEE 118-Light Blue
96 - 100	LEE 116-Medium Blue Green
101 - 105	LEE 124-Dark Green
106 - 110	LEE 139-Primary Green
111 - 115	LEE 089-Moss Green
116 - 120	LEE 122-Fern Green
121 - 125	LEE 738-JAS Green
126 - 130	LEE 088-Lime Green
131 - 135	LEE 100-Spring Yellow
136 - 140	LEE 104-Deep Amber
141 - 145	LEE 179-Chrome Orange
146 - 150	LEE 105-Orange
151 - 155	LEE 021-Gold Amber
156 - 160	LEE 778-Millennium Gold
161 - 165	LEE 135-Deep Golden Amber
166 - 170	LEE 164-Flame Red
Colourwheel rotation effects	
171 - 185	Colourwheel rotation forward (fast - slow)
186 - 190	Colourwheel rotation stop
191 - 205	Colourwheel rotation backward (fast - slow)
206 - 210	Colourwheel rotation stop
Random colours	
211 - 225	Fast - slow
White hue	
226 - 230	Warmwhite - 2700K
231 - 235	Warmwhite - 3200K
236 - 240	Neutralwhite - 4200K
241 - 245	Coldwhite - 5600K
246 - 250	Coldwhite - 7200K
251 - 255	Coldwhite - 8000K

## Appendix → Special Control Channel

### Special Control Channel

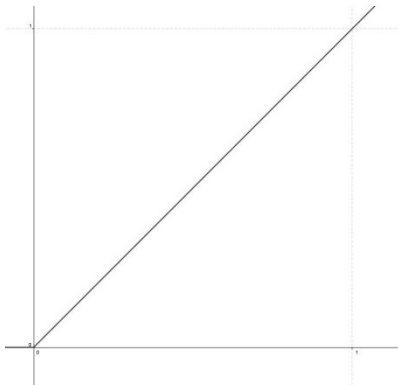
Value	Function
0 – 10	Reserved
11 – 15	fan Regulated
16 – 20	fan Silent
21 – 25	fan Standard
25 – 30	fan High power
31 – 35	Reserved
36 – 40	Remote DMX Address–Low (001–256)
41 – 45	Must work with "Remote DMX Add." channel to set with value for 1+ Reserved
46 – 50	Remote DMX Address–High (257–512)
51 – 55	Must work with "Remote DMX Add." channel to set with value for 257+ Reserved
56 – 60	Dimmer Speed: Smooth
61 – 65	Dimmer Speed: Fast
66 – 70	Reserved
71 – 75	Dimmer Curve: Linear
76 – 80	Dimmer Curve: Theatrical
81 – 85	Dimmer Curve: Sqaure Law
86 – 90	Dimmer Curve: Inverse Sqaure Law
91 – 95	Reserved
96 – 100	P/T speed slow
101 – 105	P/T speed Normal
106 – 110	P/T speed Fast
111 – 115	Reserved
116 – 120	Pan Invert: ON
121 – 125	Pan Invert: OFF
126 – 130	Tilt Invert: ON
131 – 135	Tilt Invert: OFF
136 – 140	Reserved
141 – 145	Position Feedback: ON
146 – 150	Position Feedback: OFF
151 – 155	Reserved
156 – 160	Pan Reset
161 – 165	Tilt Reset
166 – 170	Reserved
171 – 175	All Motors Reset
176 – 180	Fixture Reset
181 – 255	Reserved



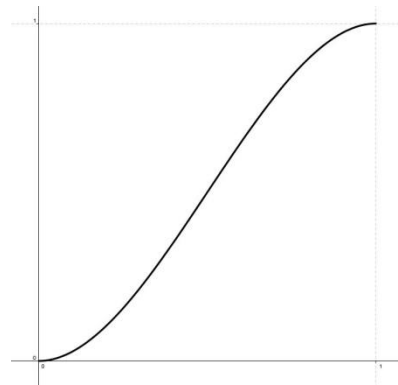
## Shutter Channel

Value	Function
0 - 15	Shutter Closed
16-47	Random Strobe (slow - fast)
48-79	Random Ramp Up (slow - fast)
80-111	Random Ramp Down (slow - fast)
112-143	Random Ramp UP & down (slow - fast)
144-199	Strobe Pause 5s - 1s (slow - fast)
200-239	Strobe 1Hz - 20 Hz (slow - fast)
240-255	Shutter Open

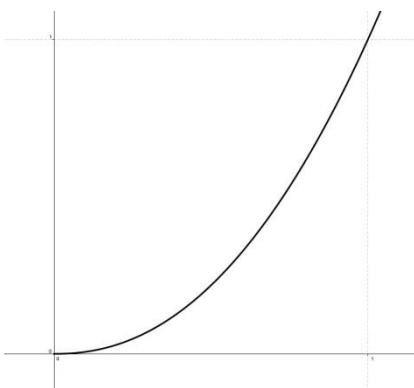
## Dimmer Curves



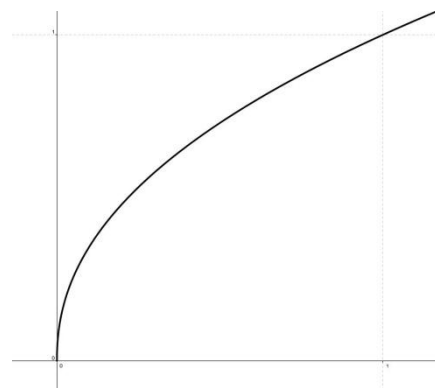
Linear



Theatrical



Square



Inverse square

Appendix → Patterns

### Patterns

Helios+ 19z Animation Patterns

DMX 000 - 115 = Static

DMX 116 - 181 = Chase Animation - works with Pattern speed table

DMX 185 - 250 = Fade Animation - works with Pattern speed table

value after / = animation runs reversed

#### Static

Value	pattern	Value	pattern	Value	pattern	Value	pattern	Value	pattern	Value	pattern	Value	pattern
000-002		017		032		047		062		077		092	
003		018		033		048		063		078		093	
004		019		034		049		064		079		094	
005		020		035		050		065		080		095	
006		021		036		051		066		081		096	
007		022		037		052		067		082		097	
008		023		038		053		068		083		098	
009		024		039		054		069		084		099	
010		025		040		055		070		085		100	
011		026		041		056		071		086		101	
012		027		042		057		072		087		102	
013		028		043		058		073		088		103	
014		029		044		059		074		089		104	
015		030		045		060		075		090		105	
016		031		046		061		076		091		106-115	



Appendix → Patterns

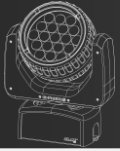
Animated

chase	fade	1	2	3	4	5	6	7	8	9	10	11	12
116/185	117/186												
118/187	119/188												
120/189	121/190												
122/191	123/192												
124/193	125/194												
126/195	127/196												
128/197	129/198												
130/199	131/200												
132/201	133/202												
134/203	135/204												
136/205	137/206												
138/207	139/208												
140/209	141/210												
142/211	143/212												
144/213	145/214												
146/215	147/216												



Appendix → Patterns

chase	fade	1	2	3	4	5	6	7	8	9	10	11	12
148/217	149/218												
150/219	151/220												
152/221	153/222												
154/223	155/224												
156/225	157/226												
158/227	159/228												
160/229	161/230												
162/231	163/232												
164/233	165/234												
166/235	167/236												
168/237	169/238												
170/239	171/240												
172/241	173/242												
174/243	175/244												
176/245	177/246												
178/247	179/248												
180/249	181/250												
251-255													



## Appendix → Ring Patterns

### Ring Patterns

#### Helios+ 19z Ring Animation Patterns

DMX 000 - 029 = Static

DMX 030 - 113 = Chase Animation - works with Pattern speed table

DMX 114 - 197 = Fade Animation - works with Pattern speed table

value after / = animation runs reversed

#### Static

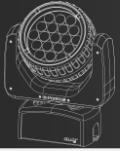
Value	pattern	Value	pattern	Value	pattern	Value	pattern	Value	pattern	Value	pattern	Value	pattern
001		006		007		008		009		010		011	
-005													
012		013		014		015		016		017		018	
019		020		021		022		023		024		025	
026		027		028		029							

#### Animated

chase	fade	1	2	3	4	5	6	7	8	9	10	11	12
030	114												
031	115												
032	116												
033	117												
034	118												
035	119												
036	120												
037	121												
038	122												
039	123												
040	124												
041	125												

Appendix → Ring Patterns

chase	fade	1	2	3	4	5	6	7	8	9	10	11	12
042	126												
043	127												
044	128												
045	129												
046	130												
047	131												
048	132												
049	133												
050	134												
051	135												
052	136												
053	137												
054 / 066	138 / 150												
055 / 067	139 / 151												
056 / 068	140 / 152												
057 / 069	141 / 153												
058 / 070	142 / 154												
059 / 071	143 / 155												
060 / 072	144 / 156												
061 /	145 /												

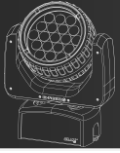


Appendix → Ring Patterns

chase	fade	1	2	3	4	5	6	7	8	9	10	11	12
073	157												
062 / 074	146 / 158												
063 / 075	147 / 159												
064 / 076	148 / 160												
065 / 077	149 / 161												
078	162												
079	163												
080	164												
081	165												
082	166												
083	167												
084	168												
085	169												
086	170												
087	171												
088	172												
089	173												
090	174												
091	175												
092	176												
093	177												
094	178												
095	179												

Appendix → Ring Patterns

chase	fade	1	2	3	4	5	6	7	8	9	10	11	12
096	180												
097	181												
098	182												
099	183												
100	184												
101	185												
102	186												
103	187												
104	188												
105	189												
106	190												
107	191												
108	192												
109	193												
110	194												
111	195												
112	196												
113	197												



Appendix → For Your Notes

## For Your Notes

Appendix → For Your Notes



B&K Braun GmbH  
Industriestr. 2  
D-76307 Karlsbad - Germany

Tel: +49 7248 912 100  
Fax: +49 7248 912 119